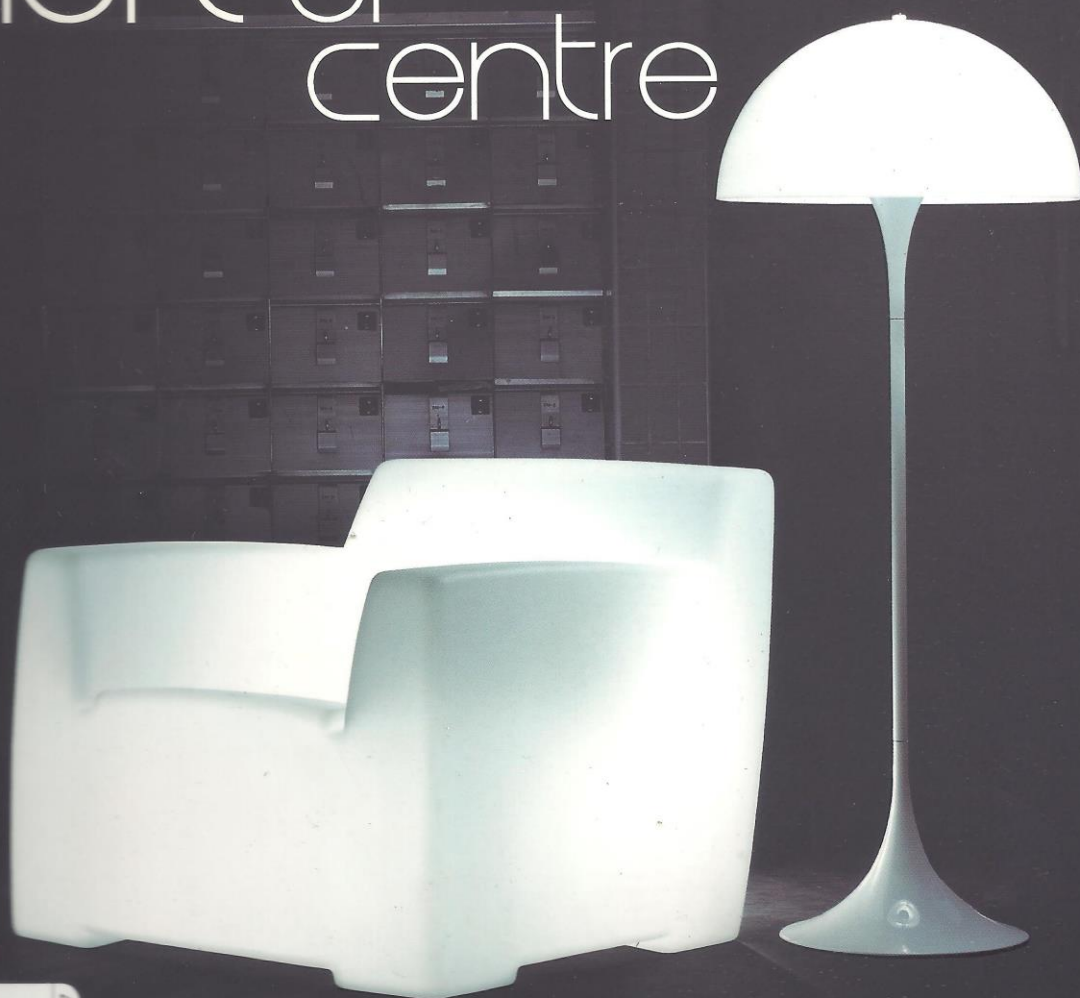


cubes

urban interiors . home furnishings . latest trends + designs

left of centre



8 2007 • \$58.00
85-903073

Featuring projects by RT+Q Architects, Frank La Rivière + HSI Architects
Take a walk on the mad side with Chris Lee and Asylum in our special feature
We present bites of aberrance from Outofstock, LeSportsac, Mafoombey, SOZ Corporation and many more

inviting nature

Text by Lee Kim Wei
Images Courtesy of The Interior Place

The Interior Place instills the natural feel of a modern resort into a five-storey five-bedroom cluster house at The Shaughnessy on Miltonia Close.



The 340-square-metre built-in area of a five-bedroom cluster intermediate terrace house at The Shaughnessy on Miltonia Close grants the designer ample space to explore, inject and intertwine modernity with rustic tranquility, allowing the family to immerse in resort-like ambience and enjoy a retreat in the very comfort of their home. Through the clever use of landscaping, colours, furnishings and lighting throughout the five storeys, including the basement and roof terrace; practicality and comfort are simultaneously achieved, without forgetting the family's timetables and day-to-day habits.

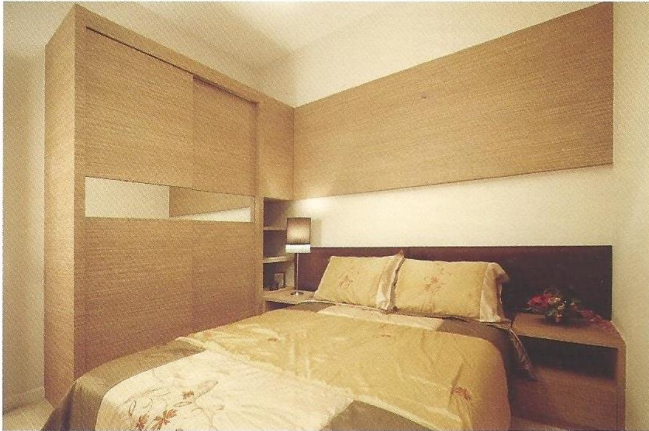
IDYLIC ENCLAVE

Let's begin from the top. The presence of a roof terrace enhances the resort element. Here, the swing, the bench and the landscaping beckons you to take a break out in the open. What better way to while away an afternoon or to gaze into the open sky on a starry night than in the privacy and exclusivity of your own rooftop garden? To second the theme of peace and serenity, the koi pond and the water feature next to the dining area make pleasing views that can wash away your worldly cares, even as they add touches of nature and warmth to the otherwise modern western design.



By extending nature's rustic beauty to ground-level, the interior is eye-catching with wooden beams running across the ceilings of the living and dining areas. Rattan sofas, coconut-husk material of the TV feature wall, fluid shapes of the translucent wooden lampshades, wooden chairs, rustic coffee table, nature-inspired artwork, wooden-strips partition, and other splashes of dark wood and walnut colours echo strong resonance of stylistic personal retreat. In the dining area, the natural texture of the mirror's vertical borders as well as the greenery beyond the sliding doors bridge the interior with the exterior.

Even the recessed area, overlooking the balcony that is decorated with potted plants and a sculpture, is comfortably accessorised with small pillows and given a stroke of artistic expression.



HOME GALLERY

All the rooms are characterised differently, as if showcasing art pieces and fine living. The basement guestroom is pleasantly furnished with warm walnut colours and cosy beddings, while its wardrobe displays a hint of cheekiness with its slim strip of mirror which does not overpower the room. This warm hue is continued in the level two guestroom which sits across from the master bedroom. Here, the under-lit platform bed evokes a cosy and dreamy effect that nobody can resist.

The master bedroom is grandiosely decorated with the two-toned headboard as the focal point. The latter is adjacently well-balanced by a curtain which separates a cosy window ledge from the rest of the room. This mini gallery offers the homeowners a place to slink away for some private personal time.

Rising up to level three, the daughter's white, black and grey shaded room appears romantically tinged with purplish pink and traces of blue. The sleek TV and stylish lighting embody modern chic and metropolitan living while portraying youthful playfulness. On the same level, an excess room functions as a ballet room. Furnished as a professional dance studio, the daughter is able to practise her song and dance conveniently and comfortably. [E]

Type:	5-storey 5-bedroom cluster house on Miltonia Close
Area:	340 square metres
Designer:	The Interior Place Pte Ltd
Tel:	62929 882
Fax:	62929 883